

27 Wylde Street Telopea NSW

Explore 27 Wylde St Telopea to touch and feel for yourself an incredible lifestyle. To save your time, create a hassle-free home to truly enhance your experience.

With sculpted finishes that flow organically around the landmark building, this generously proportioned duplex is ready for you to move in.

Every space is generously layered with quality & luxurious finishes that exemplify richness of character and depth.

- Located on the border of Oatlands/Telopea in a quiet cul-de-sac

- Brand new kitchen installed with stainless European appliances

4 3 2

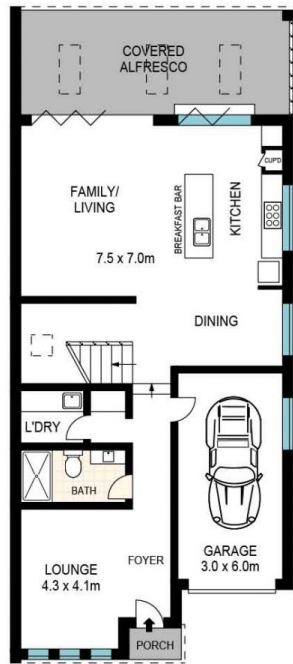
Price : \$ 1,480,088

Land Size : 331 sqm

View : <https://www.sone.com.au/sale/nsw/parramatta/telopea/residential/semi-detached/6250527>



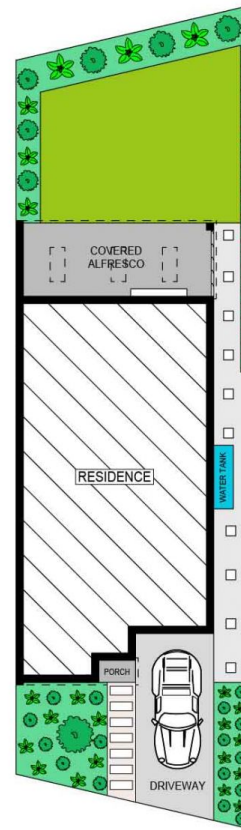
John (junrui) Huang
0433234787



GROUND FLOOR



FIRST FLOOR



SITE PLAN
(NOT TO SCALE)



Scale in metres. Indicative only. Dimensions are approximate. All information contained herein is gathered from sources we believe to be reliable. However we cannot guarantee it's accuracy and interested persons should rely on their own enquiries.

27 Wylde Street, Telopea