

**235 Liverpool Road Strathfield NSW**

4 1 3

This recently renovated home is fit for the growing family and perfect for entertaining with its open plan living areas which open up to a private backyard with garage access, completed with no compromise on finishes - be sure to inspect!

**View :** <https://www.sone.com.au/lease/nsw/inner-west/st-rathfield/residential/house/6028226>

Other key features include;

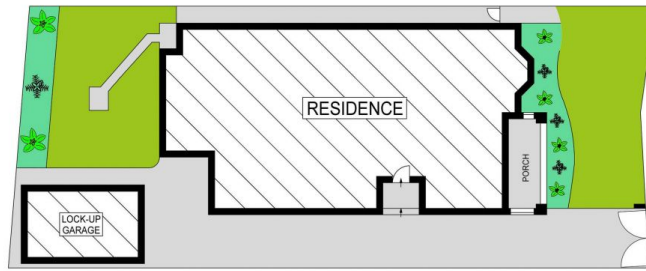
- 4 Large bedrooms
- Near new polished timber floor-boards throughout
- Sunroom leading out to a low maintenance yard with separate toilet at rear
- Good sized kitchen with stone benchtops, stainless steel appliances and ample extra storage
- Reverse-cycle Air-conditioning
- Internal laundry
- Lock up garage with long driveway, ample parking



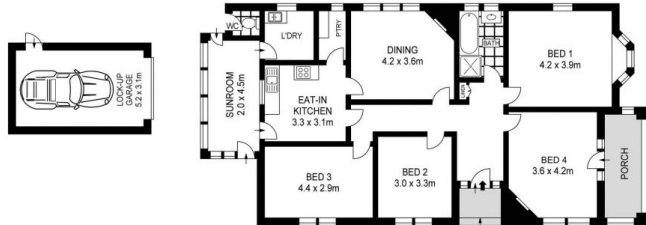
**Jeff Son**  
0433234787



**Nelson Kim**  
0433234787



SITE PLAN (NOT TO SCALE)



GROUND LEVEL

235 LIVERPOOL ROAD, STRATHFIELD

APPROX. INT : 125m<sup>2</sup>



Scale in metres. Indicativ only. Dimensions are approximate. All information contained herein is gathered from sources we believe to be reliable. however we cannot guarantee its accuracy and interested persons should rely on their own enquiries