



5G/19-21 George Street North Strathfield NSW

2 🛏 2 🚿 1 🚗

Explore 5g/19-21 George St North Strathfield in the 'Strathaven Complex' to touch and feel for yourself an incredible lifestyle. To save your time, create a hassle-free home to truly enhance your experience. Hand made for the best, the home delivers a living experience that is distinctly welcoming and without equal. With sculpted finishes that flow organically around the landmark building, this generously proportioned apartment is elevated taking in views of the garden complex. Every space is generously layered with quality finishes that exemplify richness of character and depth.

- Two Bedrooms, main with walk-in robe & en-suite
- Kitchen with gas cooking, dishwasher
- Multiple living spaces with floorboards
- Lush tropical gardens with Resort Style in-ground pool
- Footsteps away to Bakehouse Quarter North Strathfield

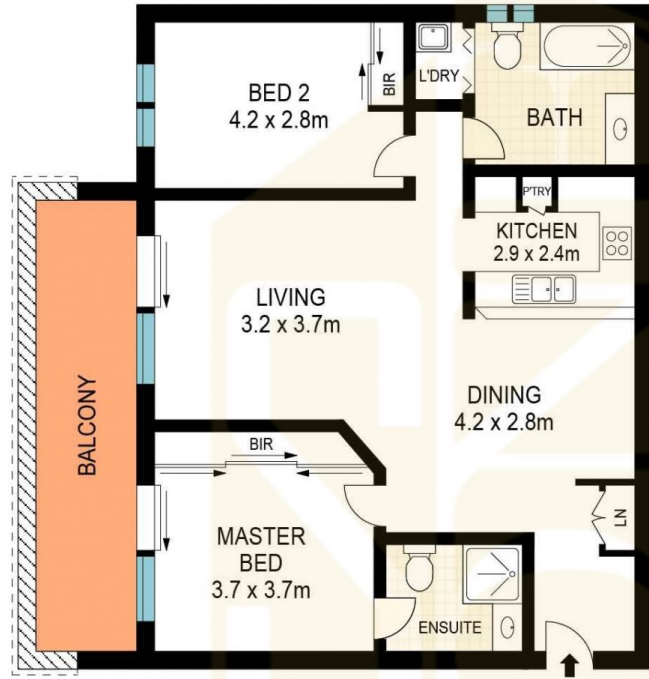
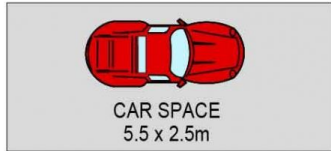
Building Size : 108 sqm
View : <https://www.sone.com.au/lease/nsw/inner-west/north-strathfield/residential/apartment/5822496>



Min Choe
0410 300 214



Nelson Kim
0433234787



This Floor Plan was prepared by WWW-CRYINGOUTLOUD.COM.AU for illustration purposes only. This document does not constitute any part of an offer or contract. Dimensions are approximate only. Copyright ©2019 Crying Out Loud. All Right Reserved.

APPROX. INT : 86m²



5g/19-21 George Street, North Strathfield

ESTATE AGENTS