



19/56 Fitzgerald Road Ermington NSW

3 1 2

With flowing light filled interiors, S ONE Estate Agents presents 19/56 Fitzgerald Road Ermington. This single level brick home is perfect for the first home buyer or savvy investor. It really is a blank canvas ready to be created into art. Positioned in one of the most soughtafter streets in the local area, the property is moments from Cowells Lane Reserve, as well as quality schools and transport options.

- 3 well proportioned bedrooms
- Large lounge/dining with study option
- Gas kitchen with courtyard views
- Covered entertaining deck perfect for alfresco living
- Automatic Lock Up Garage - perfect for storage
- Total land size: approximately 195.2sqm
- Located on the West Ryde border, close to Melrose Park, Ermington Shops, School & Victoria Rd Bus Routes, allowing access to the Parramatta & Sydney City CBD

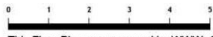
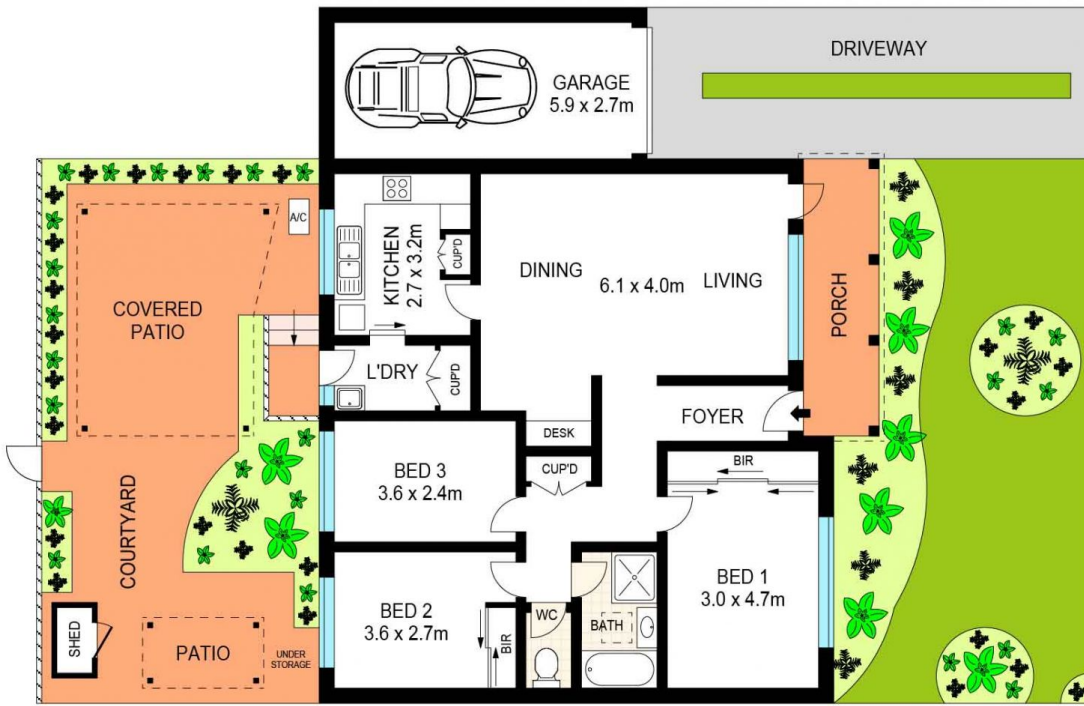
Price : \$ 732,000
Land Size : 195.2 sqm
View : <https://www.sone.com.au/sale/nsw/parramatta/ermington/residential/villa/5822487>



John (junrui) Huang
0433234787



Nelson Kim
0433234787



This Floor Plan was prepared by WWW>CRYINGOUTLOUD.COM.AU for illustration purposes only. This document does not constitute any part of an offer or contract. Dimensions are approximate only. Copyright @2019 Crying Out Loud. All Right Reserved.



19/56 Fitzgerald Road, Ermington