

S



9 Brush Road Eastwood NSW

7 🏠 4 🚿 5 🚗

Explore 9 Brush Road Eastwood to touch and feel for yourself an incredible lifestyle. To save your time, create a hassle-free home to truly enhance your experience. Hand made for the best, the home delivers a living experience that is distinctly welcoming and without equal. With sculpted finishes that flow organically around the landmark building, this generously proportioned mansion is elevated taking in views of the city beyond. Every space is generously layered with quality & luxurious finishes that exemplify richness of character and depth.

Price : \$ 3,800,000
Land Size : 866 sqm
View : <https://www.sone.com.au/sale/nsw/northern-suburbs/eastwood/residential/house/5822438>

- Multi-Awarded Architecture Modern Luxury House Design

- 3 Storey Luxury House with 7 Beds and 4 Bath and 5 Car Park for Grand Family



John (junrui) Huang
0433234787



Nelson Kim
0433234787

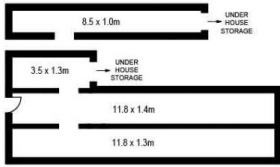
<https://www.sone.com.au>



UPPER LEVEL



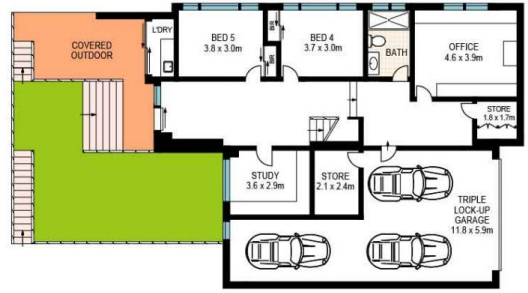
SITE PLAN
(NOT TO SCALE)



BASEMENT / WINE CELLAR / STORAGE



ENTRY LEVEL



LOWER GROUND LEVEL



This Floor Plan was prepared by WWW-CRYINGOUTLOUD.COM.AU for illustration purposes only. This document does not constitute any part of an offer or contract. Dimensions are approximate only. Copyright ©2019 Crying Out Loud. All Right Reserved.

APPROX. INT : 463m²



9 Brush Road, Eastwood