

3a Wesley Street Telopea NSW

5 4 2

Explore 3a Wesley St to touch and feel for yourself an incredible lifestyle, to save your time, create a hassle-free home and to truly enhance your experience.

Brand new, the home delivers a living experience that is distinctly welcoming and without equal.

With sculpted finishes that flow organically around the building, this generously proportioned 5 bedroom castle is elevated taking in views of the park and the city beyond.

Every space is generously layered with quality finishes that exemplify richness of character, depth and sophistication.

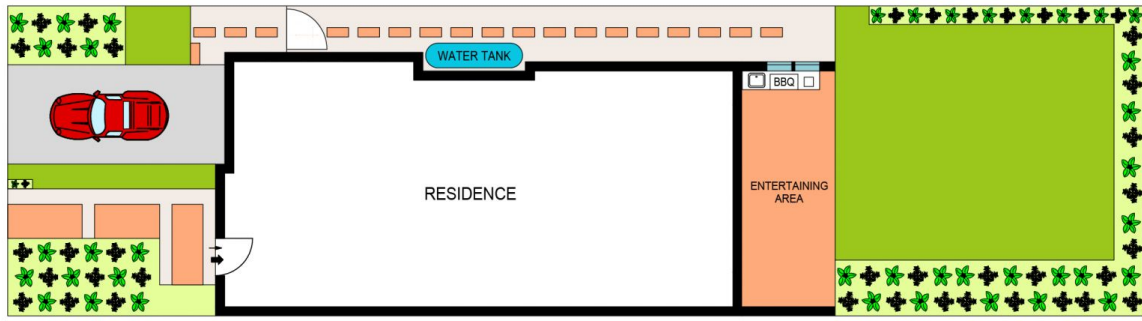
- Carlingford West School Catchment
- 5 large bedrooms - walk in robes and ensuites
- Luxurious gas kitchen with stone breakfast bar and sleek

Price : \$ 1,480,000

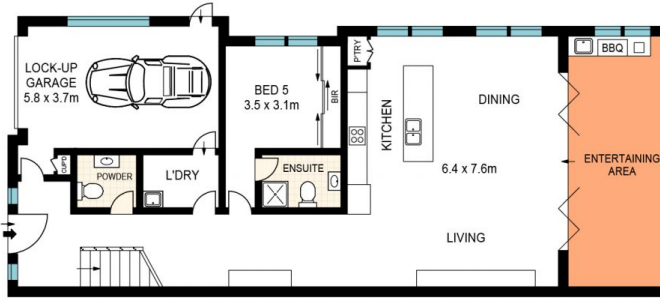
View : <https://www.sone.com.au/sale/nsw/parramatta/telopea/residential/house/5822437>



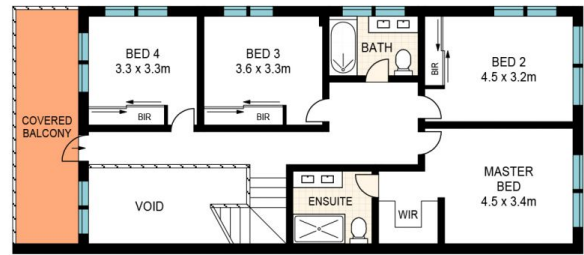
John (junrui) Huang
0433234787



SITE PLAN
(NOT TO SCALE)



GROUND LEVEL



LEVEL ONE



This Floor Plan was prepared by WWW>CRYINGOUTLOUD.COM.AU for illustration purposes only. This document does not constitute any part of an offer or contract. Dimensions are approximate only. Copyright @2019 Crying Out Loud. All Right Reserved.

APPROX. INT : 226m²



3 Wesley Street, Telopea