



86 Brinsley Avenue Schofields NSW

5 3 2

As you enter this extraordinary unique near new home, you will be welcomed immediately by the expansive large open plan living area that home has to offer.

Sun drenched spacious lounge, reflecting beams of light throughout the home, it seamlessly blends into a large modern kitchen. As you stare off into the backyard which has room for a pool or granny flat will sure to make you consider the home.

The heartbeat of the property is the ultra - modern, gourmet kitchen, complete with vast amounts of storage, walk in pantry and quality appliances.

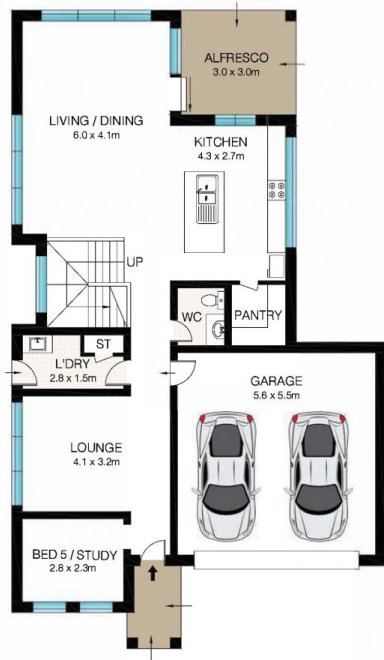
Stunning interiors providing stylish five bedrooms, all with built in wardrobes. The Master bedroom complete with an extra large ensuite and enormous walk in wardrobe. The

Price : \$ 891,001

View : <https://www.sone.com.au/sale/nsw/western-sydney/schofields/residential/house/5822432>



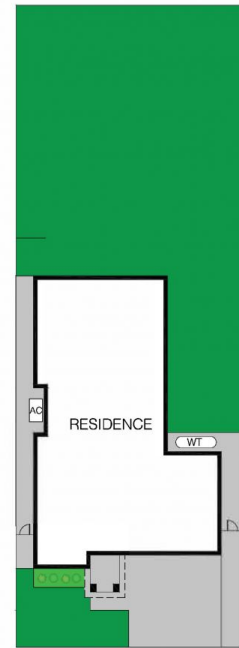
John (junrui) Huang
0433234787



GROUND FLOOR



FIRST FLOOR



SITE PLAN (NOT TO SCALE)



INT: 207m²
EXT: 13m²



This Floor Plan was prepared by WWW.CRYINGOUTLOUD.COM.AU for illustration purposes only. This document does not constitute any part of an offer or contract. Dimensions are approximate only. Copyright ©2019 Crying Out Loud. All Rights Reserved.

86 Brinsley Avenue, Schofield